

iBGR 300 Boarding Gate Reader

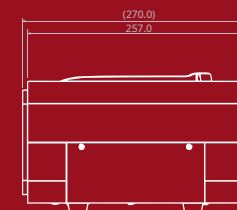
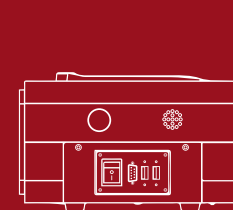
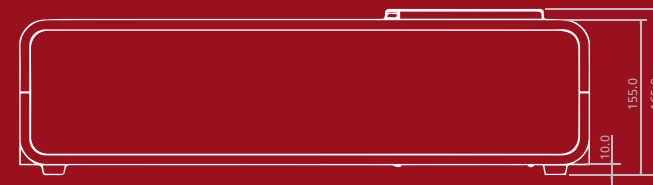
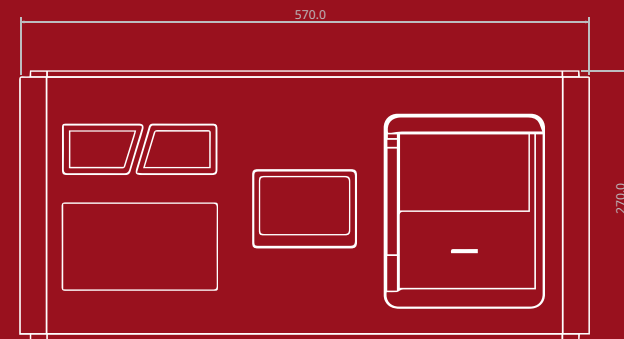
BGR



Fast and Accurate Reader For Quick Boarding Check!



iBGR 300 [BGR]

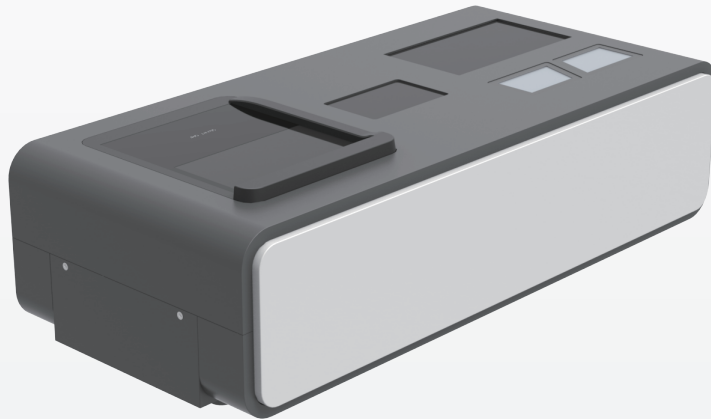


Components



BGR

(Boarding Gate Reader)



Boarding Gate Reader (BGR) is the most advanced security device used at the flight boarding gate that verifies the passengers' information.

IATA recommended PDF417, 2D, 1D barcode recognition including Smartphone and Tablet PC

Passport Reader (MRP) Slot

Real-time confirmation of flight ticket information with 7" LCD

User interface (Buzzer, LCD, 3 color status LED)

High-speed barcode scanner with 360° barcode scan area for fast processing

iBGR 300 [BGR]

CONTROL UNIT	Processor	Intel Atom D2550 (1.86GHz)
	Memory	DDR3 2GB
	Storage	SSD 64GB
BARCODE SCANNERS	Scanner Type	CCD
	Scan Pattern	Advanced CCD
	Motion Tolerance	QR : 60ms
	Decoding Capacity	Standard 1D, 2D, Postal and OCR Symbology
	Barcode Types 1D	EAN-13/-8 (JAN-13/-8), UPC-A/-E, UPC/EAN (with add-on), Interleaved 2 of 5 (ITF), Standard 2 of 5 (STF), CODABAR (NW-7), CODE39, CODE93, CODE128, GS1-128 (EAN-128), GS1 DataBar (RSS)
	Barcode Types 2D	QR code, micro QR code, SQRC, iQRcode, PDF417, microPDF417, DataMatrix, Aztec, MaxiCode GS1 DataBar Composite (EAN.UCC Composite)
MINIMUM RESOLUTION	1D Code	0.18mm
	2D Code	0.25mm
POWER	Input Power	100~240VAC , 50/60Hz
	Power Consumption	MAX 23 Watt (216VAC, 0.18Amp)
INTERFACE	Serial	3 x Serial (RS-232C)
	USB	1 x USB
PRODUCT SIZE	570mm (W) x 200mm (D) x 165mm (H)	
ENVIRONMENTAL SPECIFICATIONS	Operating Temperature	5°C ~ 45°C (41°F ~ 113°F)
	Storage Temperature	(-)20°C ~ 60°C (-)4°F ~ 140°F)
	Humidity	20% ~90% RH , non-condensing
	Operating Environment	Indoor
CERTIFICATION	AirCUS	OK
	MUSE	OK

Mobile / Barcode Recognition

LCD, LED

Scan Type

Mobile and Imprint Standards
PDF417 Barcode,
1D/2D Barcode Recognition
Postal and OCR
symbology recognition
Improved code recognition rate
by mega-pixel sensors

Recognition of flight ticket
information through
7" color LCD
Status LED (Blue, Green, Red)

CCD (Charge-Coupled Device)
Scanner Type
Scan Pattern : Advanced CCD

The Best Partner of Aviation Systems **urielsoft**

Add. 07528 #B-1105, 401 Yangcheon-ro, Gangseo-gu, Seoul, KOREA

Tel. +82.2.2638.5733 Fax. +82.2.2638.5734 E-mail. master@urielsoft.co.kr www.urielsoft.co.kr